

Academy 21
The Online Alternative Provision Experts

Prospectus ***2025/2026***



Welcome to Academy21

The UK's leading online alternative provision specialists

Thank you for taking the time to learn more about our school.

We have developed our high-quality, cost-effective alternative provision in direct response to the needs of local authorities, schools, and the young people we support. For us, partnership is key. Through flexible programmes and excellent teaching, we bring a balance of support, academic challenge, and educational engagement to students with a broad range of needs.

Academy21 can enable you to provide all your learners with access to high-quality live teaching that supports their success and ultimate reintegration. We focus on improving student confidence, which is supported by the work of our seamless and efficient onboarding. Each one of our clients is also assigned a Regional Manager who is always available to answer any questions and provide tailored guidance. Our wide range of programmes is designed to help you with your specific needs, from an upstream intervention to a shorter-term placement to support reintegration or a transition onto a new placement.



Amy Husband
Executive Head

Our provision is rooted in live, relational teaching that offers your students the opportunity to be taught in small groups with experienced subject specialist teachers.

We use a blend of formative assessment, spiral curricula and research-informed pedagogy to ensure all our students receive a comprehensive academic curriculum from their nurturing virtual classroom, regardless of their starting point.

Our teachers and leaders are highly adept at supporting your students to participate and engage with their learning, focusing first and foremost on building their confidence and self-esteem.

Our profile of students is very diverse. Examples of the type of young people we support are: students who are too anxious to attend school; pupils who are disconnected from learning and routines; those who are at risk of exclusion; vulnerable young people; students with chronic medical or additional needs, and many other learners facing their own unique challenges.

With Academy21's personalised approach, we're proud to say that every partner gets the right solution, and every student is given the opportunity not only to progress academically, but to truly thrive.



Alessandro Capozzi
Director of Operations

About Academy21

Welcome to Academy21	1
Why Choose Academy21	3
The Benefits Of Online Alternative Provision	4

Our Provision

Our Provision at a Glance	5-6
Who We Work With	7-8
Katy's Story	9-10
Enhanced Support Services	11-12
How We Teach	13-14
Our Virtual Classroom	15-16

How it Works

5 ways to use Academy21 to support your students	17-18
A Sporting Chance	19-20
How to set up an internal Alternative Provision	21-22
6 Steps to Smooth Reintegration	23-24
From Long-Term Absence to Top GCSE Grades	25-26

Key Stage 3 and 4

Our Provision: Courses for Key Stage 3 and Key Stage 4	27-28
Key Stage 3 Curriculum	29-30
Key Stage 4 Curriculum	31-34
Online Alternative Provision for Students in Wales	35-36

NEW Courses for 2025/2026

Key Stage 2 Curriculum	37-38
GCSE Booster	39
Next Steps: Reintegration & Wellbeing	39
IGCSE Art and Design	40

Key Stage 5

Key Stage 5 Curriculum	41-42
Holly's Story	43-44

Get Started With Us

Reporting & Monitoring	45-46
Enrolment Process	47-48
Curriculum Overview	49-50

WHY CHOOSE ACADEMY21:

The Value of Online Alternative Provision

Academy21 is proud to be the first online alternative provision accredited by the Department for Education.

Our mission is to provide students with additional needs or challenging circumstances a structured and supportive pathway to achieve recognised academic outcomes.

Each year, we collaborate with hundreds of schools across more than 150 local authority areas in England and Wales. Together, we ensure that students placed with us receive a high-quality education tailored to their needs.

We remove barriers to learning, encourage students to re-engage, build their confidence, and improve attendance and participation.

Ultimately, this supports their smooth reintegration into mainstream schooling or another suitable educational path.

Our broad and balanced curriculum from KS2 to KS5 is inclusive by design. We support young people to re-engage, build confidence, and thrive both in and beyond school.



The Benefits of Online Alternative Provision

Flexible Learning Locations

Academy21's fully online provision can be accessed from anywhere—at home, within an alternative provision setting, or in school-based Internal Alternative Provision units. This flexibility allows students to continue their education in an environment that best supports their learning and wellbeing.

High-Quality Teaching

All students, regardless of location, access live, interactive lessons delivered by fully qualified, experienced subject specialists. This ensures consistency in teaching quality across all settings, making online AP particularly beneficial for schools and trusts that support students across multiple sites.

Ongoing Monitoring and Reporting

Regular communication with schools, alongside continuous tracking of student progress, ensures that our provision remains dynamic and responsive. Students can be moved into more challenging subject groups or have additional subjects added as they build confidence over time.

Continuity of Education

Whether a student requires short-term support or a longer-term solution, our online AP ensures stability during periods of change. Our curriculum, spanning Year 5 to Year 13, provides a consistent educational experience, helping students maintain progress even in challenging circumstances.

Tailored Support

Academy21 offers rapid onboarding and personalised timetables, ensuring that students can seamlessly integrate into learning at any point in the year. Our adaptable provision allows students to combine online education with other commitments, supporting their individual needs.

A Partnership Approach

We work closely with schools to ensure that students who need an alternative education pathway—whether through on-site inclusion, Internal alternative provision (IAP) online or due to challenges with school attendance—receive structured academic support. In many cases, this collaborative approach supports reintegration into the mainstream classroom.

Our Provision at a Glance:

Personalised Support for Diverse Learning Needs

We offer tailored learning experiences for students with SEN and additional needs, incorporating tools like InspiredAI to personalise learning. Academic and wellbeing support services help students thrive both in and beyond education.

Highly Effective Safeguarding

Student safety is our highest priority. Our safeguarding measures include enhanced DBS checks for all staff, online safety education, robust filtering and monitoring, and a team of experienced designated safeguarding leads (DSLs).

[View our recruitment and safeguarding policies](#)

100% Live Teaching with Recorded Lessons

Our teachers deliver 100% live lessons, fostering real-time engagement and interaction. Recorded lessons support students who need to revisit content, enhancing learning flexibility.

DfE-Accredited, High-Quality Teaching

As the first online alternative provision accredited by the Department for Education, Academy21 is recognised for its rigorous quality standards. Our fully live, adaptive lessons ensure engaging, interactive learning for all students.

Dedicated Client and Student Induction

We ensure a smooth start for both students and partner schools. Our twice-weekly student induction sessions help learners settle in, while we offer regular client induction as required to ensure schools can maximise the benefits of our provision.

Qualified and Experienced Teachers

Our team consists of highly qualified subject-specialist teachers, supported by experienced senior leaders. All staff undergo rigorous safer recruitment processes, and our policies, including [safeguarding and recruitment](#).

A True Partnership Approach

When schools partner with Academy21, they gain access to dedicated regional teams offering unparalleled support. Our flexible provision lightens the workload of schools and local authorities, ensuring students receive the education they need and deserve.

“

Academy 21 has provided my most hard-to-reach pupils, who would otherwise be school refusers, with invaluable support to engage with their curriculum.

It has helped to supplement their learning, and the pupils involved with the provision have made positive progress both in terms of attendance to school and their academic studies.”

Sam Strickland,
Principal of The
Duston School



Who We Work With

Academy21 collaborates with a wide range of education providers to support students facing barriers to learning, ensuring access to high-quality, flexible online education.

We work closely with our clients to ensure that every student gets the support they need, when they need it.

Local Authorities and Virtual Schools

Academy21 proudly partners with over 130 local authorities across England and Wales, providing flexible educational support, including 6th-day provision. We help local authorities offer DfE-accredited online education for students unable to attend school due to medical, mental health, or other barriers.

As an approved provider for many local authorities, we have successfully passed rigorous quality assurance processes. Our services are featured on over 70 frameworks and directories, ensuring trusted and reliable provision for vulnerable learners.



Academy21 is our primary provider of live online, face-to-face learning at Gloucestershire County Council. They have been instrumental in fulfilling our duty to provide Alternative Education Provision under Section 19 of the Education Act. In just the first twelve months of our partnership, Academy21 has played a crucial role in the educational journey and reintegration of nearly 200 pupils. We are immensely proud of the positive impact this partnership has had on the lives of Gloucestershire's children."

James Saunders,
Gloucestershire County Council



Multi-Academy Trusts

As a national provider, we offer a range of specialist services tailored to the needs of Multi-Academy Trusts, including:

- **Tailored Consultation** – Bespoke visits and strategic planning to meet your Trust's unique needs.
- **Collaborative Quality Assurance** – Joint QA activities with your leadership team to maintain high educational standards.
- **Cost Efficiency** – Aggregate orders to maximise economies of scale.
- **Flexibility** – Adjust subjects, timetables, and classes as needs evolve.
- **Continuous Monitoring** – Track engagement, attendance, and assignments via your portal.
- **Enhanced Induction** – Large-group induction sessions with ongoing support.
- **Control** – Easily add and assign pupils across your MAT schools.
- **Unified Training** – Customised mentor training to enhance staff capabilities.

Pupil Referral Units, Physical APs and Other Settings

At Academy21, we work in partnership with Pupil Referral Units (PRUs) and other alternative provision settings to provide academically focused provision. This collaborative approach allows settings to:

- **Free Up Resources** – By integrating our high-quality curriculum, we enable settings to allocate more time and resources to pastoral and vocational support.
- **Increase Capacity** – Our flexible provision helps settings support more students, allowing them to meet growing demand without compromising the quality of care or education.
- **Expand the Depth and Breadth of Academic Provision** – We enhance the academic opportunities available to students, ensuring they have access to a wide range of learning experiences.
- **Cater to a wide range of ability** – Our live, adaptive lessons are pitched at the student's level. This means multiple children can be supported in a shared space, while working to different levels, in different subjects and classes.



"Academy21 teachers delivering the curriculum are truly making a difference for students who really are struggling, whether it is behaviour, mental health, or attendance issues. The goal is to get the student back into a routine of school. With Academy21, it is not just about staying at home; it is about helping students transition back into school life."

Matthew Judd
Sittingbourne School

Overcoming Learning Gaps Caused by Chronic Illness

The Challenge

Katy's educational journey took a difficult turn in her final year of primary school when she began suffering from debilitating headaches. What started as occasional episodes soon stretched into weeks and months, severely affecting her ability to attend school. By Year 10, Katy's attendance had dropped to just 20%, leaving her with significant learning gaps and a great deal of missed coursework. Her dream of studying medicine seemed out of reach without tailored intervention.

The Solution: Academy21's Tailored Online Learning

Having recognised Katy's needs, her school and a local education authority adviser introduced her to Academy21. While Katy remained officially enrolled in her school, she transitioned to online learning with Academy21. As a result of attending Academy21's engaging lessons, regular tutor interaction, and structured coursework, Katy was able to stay on track academically. Weekly progress reports ensured that her parents and school were informed about her academic progress and engagement every step of the way. Homework and follow-up tasks helped reinforce her learning, allowing her to build confidence and regain a structured daily routine.

"For me, it was about getting back into learning, interacting with others, and having a structure in the day." – Katy

From Concern to Confidence: A Parent's Journey with Academy21

Her own determination and the support she received from staff at Academy21 enabled Katy to get back on track academically. Katy's mother, Linda, reflects on the impact Academy21 had on her daughter's future:

"Academy21 enabled her to get good GCSE grades, move on to college, and eventually complete a Master's in Pharmacy. She's now working as a pharmacist at our local hospital, loving her job."

Helping More Students Like Katy

Mainstream education doesn't always suit every student's needs. For those struggling with medical conditions or personal challenges, Academy21 provides a flexible, structured alternative that ensures students don't fall behind. The impact of this support has even been recognised by the Headache Team at Great Ormond Street Hospital, who now recommend Academy21's services to other young people facing similar challenges.

"I wouldn't be where I am now without Academy21. They helped me continue my education while giving me structure and socialisation back into my life." – Katy

Academy21 supports students for short-term interventions or access to full-time studies, ensuring they achieve their academic goals and build a foundation for future success.

"Looking back, it was the best and most positive decision we could have made." – Linda, Katy's mum



Enhanced Support Services

As the leading online alternative provision specialist, Academy21 understands that many students require tailored support to enhance their learning.

Our enhanced support services provide exactly that. These tailored solutions are delivered by qualified counsellors and practitioners, are cost-effective, readily available and offered in short, flexible blocks to easily adapt to students' evolving needs.

Wellbeing Support

At Key Stages 3, 4, and 5, our wellbeing courses equip young people with the skills they need to thrive now and in their futures. To empower young people to take control of their mental health, become self-advocates, and create a happier foundation for learning and life.

- **Wellbeing Mentoring** – We deliver focused group sessions (up to 3 students) and 121 mentoring with experienced professionals to help students manage their wellbeing and engage with their learning.
- **One-to-One Counselling** – We offer intensive, personalised support from accredited counsellors, using CBT and person-centred therapy to address significant wellbeing issues.
- **Anxiety Management** – Small group sessions using a curriculum designed to help students understand and manage anxiety through psychoeducation and coping strategies.
- **Social Skills** – We run small group sessions to enhance students' communication skills, social interactions, and exploration of social normal in a supportive environment.

Academic Support

Our academic support courses are available for Key Stage 3 and 4 and equip students with vital study skills for school, further education, and life beyond the classroom.

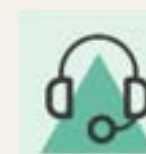
- **English as an Additional Language Support** – EAL support classes are based on the Cambridge curriculum and delivered by TEFL-qualified specialists. They are tailored to various English proficiency levels to support all learners.
- **Literacy Support** – Classes are designed to build confidence in reading and writing, with dyslexia-friendly approaches that complement the Academy21 curriculum.
- **Numeracy and Maths Support** – Lessons are tailored to individual groups in order to build confidence in numeracy and maths. They are designed and taught by subject experts who leverage interactive tools to boost student engagement and support students with specific strategies to help address any maths-based anxiety.

Benefits at a Glance



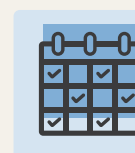
Live, Interactive Lessons

Delivered live 1-2-1 or in small groups by skilled practitioners.



Personalised Support

Smaller class sizes, with a maximum of 10 students and as few as three students, or 1-2-1 support.



Flexible Scheduling

Fit around students' existing Academy21 subject timetables or 'home school' timetables during the school day.



Inclusion

Our services support outcomes for students with additional needs, boosting engagement, confidence and attendance.



How We Teach

Aside from being subject experts, our teachers have extensive experience in teaching students who may have vulnerabilities or need additional support.

All are trained in teaching online and they leverage a variety of technology tools to make lessons interactive and personalised, keeping students engaged and motivated.

Our teachers are welcoming, supportive and empathetic. They have chosen to work in an alternative provision setting and care deeply about the impact their lessons can have on their students.

97%

of students say their Academy21 teachers support and encourage them in their learning



94%

of students say they enjoy their learning with Academy21

Quality-First Teaching

Our teaching and learning practices are informed by our own extensive research and expertise, combined with the latest approaches. Our staff are all trained on quality-first inclusive teaching as part of their ongoing professional development, reflecting regularly on how to ensure our live lessons and platform are accessible to all. At Academy21, our aim is to continually adapt to ensure our service remains inclusive by design.

Virtual Classrooms and Lesson Libraries

All lessons are conducted live, fostering a truly immersive environment for students. Classes are delivered via our custom-built 'Student Portal', where students can communicate with their teachers by talking, typing, and writing on virtual whiteboards, as well as in dedicated chat pods. The engaging lesson content is tailored to meet the diverse abilities and needs of students. All lesson content is accessible in the students' lesson library 24/7, supporting both learning and exam revision. Students also have access to support materials, homework assignments, and InspiredAI.

InspiredAI

Our InspiredAI platform provides tailored activities to help students develop skills and knowledge beyond their current level and provides real-time feedback. This complements our live lessons to give every learner additional opportunities to build their confidence and understanding.

With InspiredAI, live lessons are supported by pathways of short, engaging tasks that adapt to the learner's needs, mapped closely to the content in lessons. The platform combines video and quizzing to offer each student learning content tightly matched to gaps in their knowledge.

All students have access to this fully supported, personalised programme of work, which is novel and challenging, giving instant feedback on their efforts to motivate and recognise their progress at any time.

Working through tasks gives students a sense of accomplishment, while in-built diagnostic assessments inform our teaching and recognise progress.



Our Virtual Classroom

The Academy21 virtual classroom facilitates interactive learning with communication and engagement tools.

Students access lessons securely via personalised dashboards, where they can view timetables, access lesson content, and submit work. All communication is recorded for safeguarding purposes, and teacher-controlled support tools ensure a safe learning environment.

95%

of students say our technology features help them to participate

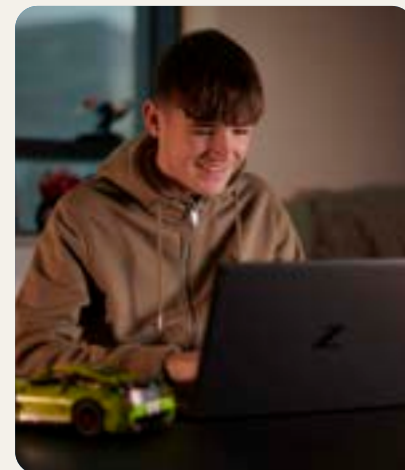


93%

of our students feel more confident in their learning since joining Academy21

"Academy21 has helped me rediscover my love for school and learning. All the teachers have provided educational and fun learning which has made me enjoy even my least favourite subjects. I have never felt so comfortable and confident to ask for help in school and to proudly say that I look forward every day to joining in on my lessons. I am endlessly grateful for all the people in Academy 21 have done for me, thank you to every single person who makes this learning platform such a safe and educational space. Thank you for all your support."

- Academy21 Student



91%

feel confident enough to ask for help in lessons

Join the Class

Click this button to join your live lessons.

Activity Alerts

This view provides an overview of homework, reviews, quizzes and more!



Today's Timetable

This view lets students see today's schedule of live lessons to attend.

Notice Board

This view lets students check reminders, news and comments from teachers or the administrative team.

5 Ways to Use Academy21 to Support Your Students

1. Early Intervention and Reintegration

Online AP supports students before they become fully disconnected from their learning. With Academy21's short-term solutions, students can re-establish positive routines and learning habits, celebrate the 'small wins' with teachers who they can connect with and effectively break cycles of poor behaviour. Respite is available across Key Stages, but it is particularly beneficial for Year 11 students preparing for their GCSE exams and Key Stage 3 students to develop positive relationships with learning before the critical Key Stage 4 years.

2. Accelerated GCSE Support

Our 1-year GCSE courses are designed to equip students with the essential knowledge and skills needed for success, even within a condensed timeframe. Our spiral curricular approach means that students who may have missed large portions of their Key Stage 4 or even Key Stage 3 education have the opportunity to cover key topics and consolidate existing knowledge.

Lessons run right up to the examination dates, with a focus on exam-taking and study skills, past papers, and revision techniques. Students on GCSE rescue courses have access to InspiredAI as standard for additional learning opportunities.

3. Medical Needs and Absence

Students only need a computer and broadband to access our live, adaptive classes, meaning they can learn from wherever is most convenient, including medical settings. Our 24/7 lesson library helps them stay on track, even when medical appointments may disrupt their schedule. Our small group classes foster peer and teacher interactions and help students feel comfortable. Short or long-term provision solutions are available to meet every student need.

4. Capacity Challenges

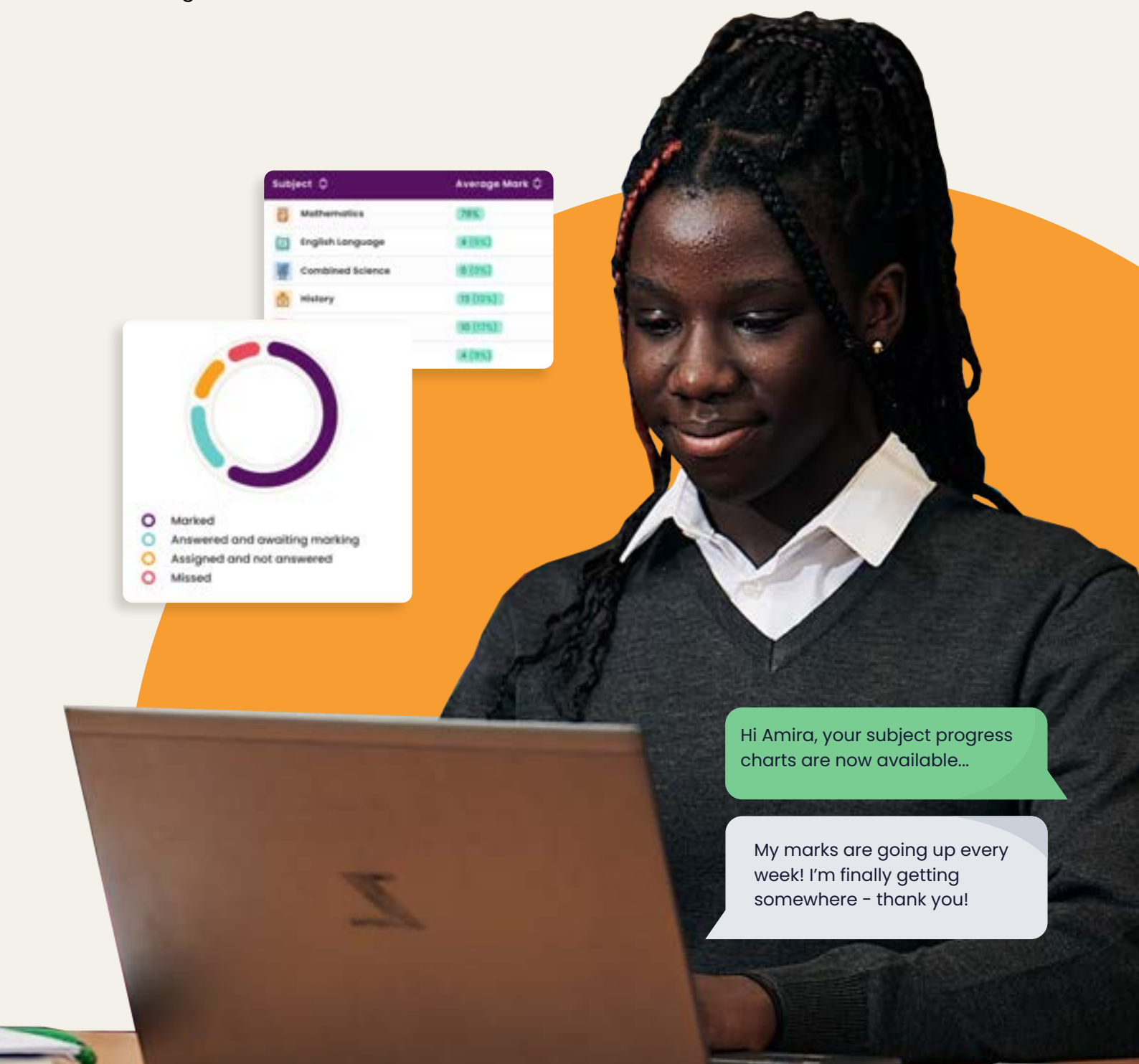
When students move between local authorities or face long waits for specialist services, they may lose access to education. Schools may also struggle with teacher shortages or subject-specific expertise gaps. Many schools, Pupil Referral Units and physical APs use Academy21 to supplement their provision, with Academy21 providing academic support for core subjects, freeing staff time and resources to focus on wellbeing support and vocational offerings.

Academy21 provides consistent, high-quality online learning for individual students or groups of students. Our streamlined enrolment process ensures a smooth transition, with engaging live lessons across a broad curriculum to maintain continuity while a long-term solution is found.

5. Fixed-Term Suspensions, Exclusions and Day 6 Requirements

Maintaining high-quality education during exclusions is essential. Academy21 provides seamless support from 'Day 6' through to governing body hearings, with the option to extend provision if needed. Our rapid enrolment process and flexible timetabling ensure students can join our live adaptive classes within 48 hours, minimising disruption to their learning.

For schools meeting Day 6 requirements, we offer a structured six-week alternative provision with 100% live lessons in small classes, delivered by specialist subject teachers experienced in supporting excluded students. This ensures continuity, engagement, and expert-led education throughout their exclusion period.



Hi Amira, your subject progress charts are now available...

My marks are going up every week! I'm finally getting somewhere - thank you!

CASE STUDY: EVOLUTION SPORTS

Offering Young People in East London a Sporting Chance

Designed for students aged 12 to 16, Evolution Sports offers structured, yet flexible alternative education provision built on mentorship, support, and personal development.

The Challenge

Evolution Sports was established in 2017 with the aim of supporting students who face challenges in attending mainstream secondary education. Founded by Eugene Dwaah, a former Head of Behaviour and Engagement, Evolution Sports offers students in Key Stages 3 and 4 the opportunity to pursue their passion for sport while working towards vocational qualifications and developing essential study and life skills. As the provision has developed, Evolution Sports started to look for a platform that could help engage their young people even further, pitch the learning at different ability levels and enhance their overall academic learning.

The Solution

In 2024, Evolution Sports introduced Academy21. Now, a group of KS4 students take our live, adaptive lessons for their core subjects: English, maths and science. The students attend their lessons every morning from a designated classroom. Since all classes are pitched at the appropriate level for each student, they can all be supported in the same space at the same time. Evolution Sports tell us that using Academy21 has reduced lesson disruptions, as students can focus more effectively. Lessons timetabled in the morning allow for sports, confidence-building activities and mentoring from Evolution Sports teachers in the afternoons. This hybrid setting helps the students stay focused while also remaining connected to their school environment, allowing them to continue developing collaboration and social skills. The centre tells us they're very happy with the progress they've seen so far and the response from their students. So much so that Evolution Sports plan to extend the use of Academy21 next year for their KS3 students.



Improved Academic Outcomes

Likewise, students feel empowered to take ownership of their learning and build confidence as they fill in learning gaps they had in the past. While Shantay felt that she *"didn't understand anything"* in Years 9 and 10, she's now taking pride in her rapid improvements across both English and maths. *"With Academy21,"* says Shantay, *"when I do my GCSEs, I feel like I can achieve four or five. I didn't think I could do that before."*

Positive Impact on Mental Health

As well as facilitating significant academic progress, the supportive and personalised learning environment Evolution Sports students now enjoy has profoundly improved their wellbeing. Shantay's own words make the impact clear: *"My mental health was going downhill in a mainstream school. I feel like it's getting brought back up now. I'm feeling happier with myself and more joyful than I ever was before."*

It's a partnership that's setting the stage for success, both for the centre and its students. Shantay, who recently celebrated her 16th birthday with her teachers and peers at Academy21, looks forward to a bright future and plans to *"go to college and do childcare."* *"Parents are a lot happier that the young people are getting more out of it than they would have done,"* Sayo adds.

The centre's founders and staff, meanwhile, are pleased to see their vision succeed for students who weren't able to thrive in mainstream secondary education. The key to it all is creating an environment where young people can start rebuilding their confidence and enthusiasm and begin to own their learning again. *"I would tell schools that do want to explore that avenue of Academy21 to do it,"* states Sayo. *"You will have more engaged students, definitely."*





6 TIPS FROM ACADEMY21:

How to Set Up an Internal AP

At Academy21, we've had the privilege of working with numerous schools who are developing their own on-site provision offering.

As such, we've seen first-hand how internal alternative provision (IAP) has evolved and worked to help schools create successful strategies from which all schools can benefit.

To ensure your internal AP is as effective as possible, we encourage consulting with us from the very beginning. Early collaboration helps us understand how our live, adaptive lessons can complement your provision and fit your specific requirements.

Develop Your Staff with Specialist Training

Staff are at the heart of a successful IAP, which means they must be more than supervisors and specialise in topics such as behaviour management, crisis de-escalation, and mental health first aid. However, developing expertise in-house can be resource-intensive. At Academy21, your students are taught by qualified, experienced subject experts online. This frees up your resources so you can focus on training your on-site staff with the supplementary skills needed to support your pupils.

Get the Right Curriculum Focus

AP students need their subject content to align with peers to ensure they are not left behind when they rejoin their classmates. However, balancing academic work with the necessary interventions, such as group therapies and one-to-one support sessions, is critical. We offer a flexible range of core curriculum subjects for Key Stage 2 to 5, all aligned with national standards. With these academic foundations in place, schools can dedicate the rest of the students' day to other support activities.

Choose a Space That Feels Connected

Calmness and comfort are crucial, but the psychological impact of removing students from their usual classroom environment is just as significant. Students referred to IAPs may feel rejected or isolated, hindering their progress and willingness to reintegrate. Choosing a classroom within the school building can be a big help. Connections can also be symbolic. If you need to use a distant location for your IAP, consider maintaining connections via decor, visits from staff students are familiar with, and displays of school news.

Focus on Building Relationships

On-site provision enables your staff to develop meaningful connections with referred students so they can get to the root of their struggles and develop personalised strategies. Relationship-building also allows staff to become mentor figures, so students have an easier time reintegrating and using their coping mechanisms successfully. Remember, too, to build those relationships with families. We also find that celebrating the 'small wins' can go a long way to building confidence. For example, you may celebrate when a student achieves an engagement goal you've set. Our teachers also create certificates of achievement to recognise their students.

Implement Data-Driven Quality Assurance

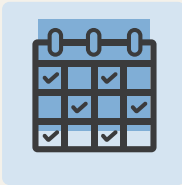
Robust data is key to measuring the success of your IAP, and a hybrid approach can be especially effective in capturing it. Academy21 provides detailed daily monitoring and regular reports on attendance, engagement, and achievement. This way, you can track student progress and outcomes and use this data to make evidence-based improvements, maximise impact, and optimise resources.

Consider a Staged Approach to Reintegration

Internal and hybrid AP can ease reintegration. Many schools use a structured, phased approach with termly or half-termly blocks, setting goals for each period. A student might access IAP for one block, return part-time for the next, and then transition to a full timetable. Academy21's flexible provision, with adaptable contracts and lesson times, allows schools to create tailored and gradual reintegration plans. This approach has proven successful for many of our clients.

6 STEPS TO SMOOTH REINTEGRATION:

Reintegration



Flexible Learning

Online AP provides a flexible learning environment that can be adapted to meet individual needs. Students can participate in live lessons from home or their preferred location, allowing them to engage with their education in a way that suits their circumstances. This flexibility can be particularly beneficial for students with medical needs or those who experience anxiety about returning to a physical classroom.

At Academy21, school timetables are also flexible to support hybrid learning models and encourage students to attend some of their lessons in their physical mainstream school, if they can. Plus, our students can access class recordings so if they have an important appointment to attend, they can easily watch their lesson at another time.



Maintaining Connection

Online AP can be integrated with the student's physical school experience. Our team collaborates closely with our partner schools so that students are not completely taken away from their traditional learning environment and can keep in touch with friends or teachers, wherever possible.

This approach helps students stay connected to their school community and maintain relationships, which can ease the transition back to full-time classroom learning.



Rapid Deployment

Our mission is to provide students with timely support when they need it most. Our straightforward enrolment process means that students can access lessons in as little as 48 hours.

As a fully online provision, we don't have the capacity issues that physical environments can often have, which means we can accommodate your students, even with little notice. This quick access to alternative education helps prevent issues from escalating and ensures that students can begin their next educational chapter without any friction.



Comprehensive Monitoring

We offer detailed tracking of student progress, including attendance, engagement, and academic performance. This data enables schools to monitor students closely and make informed decisions about their reintegration process. We find that our regular updates and feedback from teachers support schools when planning their own support strategies.

We recommend that this data is also used to keep parents informed about their child's progress. Regular updates will help to reassure families that your school is taking the best course of action to support their child and ensure educational continuity.



Aligned Curriculum

At Academy21, we know from our experience and from research that a well-planned, broad, ambitious and tailored curriculum is fundamental. Our curriculum is designed to align with national curricula. This means that students receive an online education that complements their mainstream education and won't create any learning gaps in the process. This continuity of high-quality teaching also makes the transition to mainstream school a lot smoother for students – making them more confident that they are at the same level as their peers.



Student Reintegration with Academy21

We support schools and organisations to successfully reintegrate students into their mainstream classrooms. Our online classes use tech tools to boost engagement and interaction, and our flexibility of schedules enable students to balance their Academy21 lessons with classes in their physical school. We offer a fully adaptable solution, allowing schools to easily scale our services up or down based on their needs and the progress of their students.



From Long-Term Absence to Top GCSE Grades

Challenge

After spending much of Year 7 in and out of hospital due to ongoing health issues, Lilia missed a significant portion of her education. The gap in her learning continued to widen in Year 8. By Year 9, she was tackling anxiety. "It was getting harder and harder to come back into the classroom environment" says Lilia.

Solution

A True Partnership

Working closely with the student, her family, and her school, Academy21 developed a long-term plan that allowed Lilia to gradually catch up on missed learning, improve her academic skills and knowledge in a comfortable environment, and regain the confidence needed to succeed in her GCSEs.

Personalised Support and Focused Learning

Academy21 provided Lilia with an environment that allowed her to focus on learning without the stress of being in a traditional classroom. Academy21's highly qualified teachers, experienced in both SEN and mainstream education, played a vital role in supporting her academic and emotional needs.

Top Grades and Smooth Reintegration

After three years with Academy21, Lilia achieved top GCSE results—five 8s and two 7s in subjects including History and all three separate sciences—and has transitioned back into mainstream education. She is now studying A Levels in English Language and Literature, History, and Biology and is excited to be learning in person again at a Sixth Form College.

“

"During Lilia's three years with Academy21, we saw her progress beyond expectations academically and grow in confidence. The small classes at Academy21 are brilliant, and Lilia was able to get a lot of support from her teachers in lessons and with the Friday tutorials, which she found "very helpful," say Lilia's parents."

Lilia's Parents
Student of Academy21



**NEW: GCSE courses
for 2025/26**

Find out more about our
new courses for: Art
GCSE, Primary, Wellbeing
Programme, GCSE Resit.
[See pages 42-43](#)

OUR PROVISION:

**Courses for Key Stage 3
and Key Stage 4**

At Academy21, we understand the diverse needs of our learners.
In small class sizes, we bring students a learning environment that supports them to achieve their best. When you partner with Academy21, we work with you to create a tailored approach for your specific needs. We provide an innovative and easy-to-use platform, comprehensive monitoring and reporting, and flexible provision that works for you and your students.

Online Platforms

- Student portal with access to classes, timetables, tutorials, class recordings, and additional lesson content to enhance progress
- Mentor portal with course information, tier groups and exam codes, tutorial bookings, and comprehensive attendance and engagement reports
- Regular reporting, including half termly and termly reports as well as lesson-by-lesson 'effort, understanding and interaction' marks which recognise success and identify areas to develop

Academic and Wellbeing Support

- Subject-specialist teachers experienced in supporting students with diverse needs through adaptive and relational teaching approaches
- Additional academic and pastoral support courses to improve students' wellbeing and study skills
- One-to-one tutorials each term for each subject to support wellbeing, progress and reintegration
- A range of other information, advice and guidance on our portal
- PSHE classes available on Fridays

Flexible, High-Quality Learning

- Access with just a computer, headset, and broadband connection
- Small class sizes (up to 15 students) to enable teachers to deliver more personalised support to each student
- Customisable timetables to fit in with each learner's school and outside-of-school commitments or their needs
- Classes 5 days a week; four 40-minute classes per subject, delivered Monday to Thursday as standard, with the option of additional consolidation classes on Fridays
- 39-week academic calendar

“

“The success of this (live teaching) approach is reflected in the feedback we obtained from both parents and school mentors who all highlighted the personal qualities that teachers bring to their lessons which encourage pupils to engage (and often reengage) in learning. Teachers establish a positive learning environment, welcoming pupils into class by name and encouraging them throughout lessons. This has a demonstrable impact on improving pupils' confidence and readiness to learn.”

[Ofsted Inspection Report, 2024](#)

Key Stage 3 Curriculum

Our Key Stage 3 programme is designed to re-engage young people with the world of education in preparation for GCSEs.

We provide a balanced curriculum offer for Years 7, 8, and 9 with a range of courses. Available at two levels, our Skillsbuilder programmes provide students with the knowledge and understanding they'll need for future study. Students who complete our Skillsbuilder 1 course are ready to follow Skillsbuilder 2, which ensures students will be 'GCSE ready'. Alongside maths, English, and science, pupils can study PSHE, digital skills, and humanities and citizenship.

Key Stage 3 Skillbuilder Courses			
Subject	Specification	Hours per week	Duration
Maths	National Curriculum	2hrs 40mins	2 Years
English	National Curriculum	2hrs 40mins	2 Years
Science	National Curriculum	2hrs 40mins	2 Years
Humanities & Citizenship	National Curriculum	2hrs 40mins	2 Years
Digital Functional Skills	Edexcel	2hrs 40mins	2 Years
PSHE	National Curriculum	40mins	1 Year



"Academy21 has reignited my love for learning. The teachers make every subject enjoyable, and I now feel confident asking for help. I'm truly grateful for the support and for creating such a positive, educational space. Thank you!"

Key Stage 3, Academy21 Student



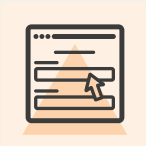
English

This course develops essential skills in reading, writing, speaking, and listening. Students will have the opportunity to read a range of exciting and challenging materials, which will stimulate their passion for literature and boost their critical thinking.



Science

This course introduces students to all major content areas across the Key Stage 3 National Curriculum for science, with biology, chemistry, and physics units distributed throughout the year.



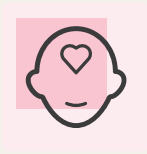
Digital Skills

Available at Level 1, the course covers five areas of study: using devices and handling information; creating and editing; communicating; making transactions; ensuring online safety. The course aims to equip students with the skills to interact with the digital world at work and in their daily lives.



Maths

This course provides excellent preparation for the rigours of GCSE Maths in all areas, particularly in numbers and algebra. It is ideal for students who have missed a significant percentage of their mathematical education and those who find maths challenging.



PSHE

This course covers key materials pertinent to Key Stage 3 students on study skills, cyber safety, emotional and physical wellbeing, positive relationships, personal finance, mindfulness, and bullying.



Humanities and Citizenship

This combined course develops skills in investigation, analysis, interpretation, evaluation, and communication. Students will develop an understanding of change and continuity as well as an appreciation of cultural and societal development. Covering a variety of topics, this course assists in preparing students for GCSE History, Geography and Citizenship Studies.

Key Stage 4 Curriculum

Our Key Stage 4 programme supports students through their GCSE years to achieve academic goals and prepare for future education or careers.

We support our students to build confidence while learning the skills and knowledge they'll need for examination success.

Core Subjects

We run GCSE courses in maths, English language and science. We also offer Functional Skills courses in English and maths and 'Everyday Science', an entry level qualification for students who may be unable to access GCSE courses.

Additional GCSE Subjects

Students can supplement their programme with a range of additional GCSEs and vocational qualifications in: English Literature, History, Citizenship Studies, Geography, ICT.

1 and 2-year GCSE Courses

One-year courses are ideal for students in need of accelerated or condensed study: two-year courses enable students to develop skills of analysis and study topics in more depth. We recommend that all students take their science GCSEs over two years: Paper 1 topics are studied in Y10; Paper 2 topics are studied in Y11. English literature, history and geography can be studied over 1 or 2 years.

Course Specifications

Our teaching is also directed at improving confidence and skills so even if your specification isn't directly listed, the topics, the teaching and support we offer will likely be of benefit to your students. See tables for specifications.

Non-examined Courses

Weekly PSHE, study skills, reintegration, health and wellbeing courses form part of our holistic educational offer.

New for 2025/26

- GCSE Art and Design
- Resit courses for post-16 students in maths and English



GCSE Maths

- Specification:** AQA 8300/Edexcel IMA1
- Content:** Skills for the future, wide range of topics from all exam papers
- Grouping:** Stage not age for Y9s and Y10s, can move to higher groups when ready.
- Levels:** Foundation, Foundation Plus, Higher at Y10 and Y11
- Outcomes:** Access to a range of Post-16 courses and employment opportunities

GCSE English Language

- Specification:** AQA 8700
- Content:** Engaging content to promote confidence and develop literacy skills
- Grouping:** According to year group, gradual development of skills in Y10
- Levels:** Course is linear, higher groups available for students at grades 6-9
- Outcomes:** Access to a range of Post-16 courses and employment opportunities

GCSE English Literature

- Specification:** AQA 8702
- Content:** Engaging content to promote confidence and develop literacy skills
- Grouping:** According to year group, gradual development of analytical skills in Y10
- Levels:** 1 year and 2 year courses available
- Outcomes:** Access to a range of Post-16 courses and employment opportunities

GCSE Combined Science (Double Award)

- Specification:** AQA 8464
- Content:** Range of topics for 2 papers, practicals are embedded into lessons
- Grouping:** Foundation and Higher, Foundation Basics available at Y11
- Levels:** Tiered exam entry, Foundation Basics for students working at grades 1-2, 'Triple Top-up' (AQA 8461/2/3) in separate sciences, Higher level
- Outcomes:** Further academic study and interesting employment opportunities

GCSE Citizenship Studies

- Specification:** AQA 8100
- Content:** Deeper knowledge of democracy, government and law. Present different viewpoints, develop reasoned arguments, plan practical citizenship actions to benefit society
- Levels:** One year, can be studied in Y10 or Y11
- Outcomes:** Access to a range of Post-16 courses and employment opportunities

GCSE History

- Specification:** AQA 8145
- Content:** Students recognise how past events influence the present. Russia 1894-1945; Interwar years 1918-1939; Power and the People – 1170 to present day; Elizabethan England 1568-1603
- Levels:** 1 year and 2 year courses available
- Outcomes:** Access to a range of Post-16 courses and employment opportunities

GCSE Geography

- Specification:** AQA 8035
- Content:** Living with the physical environment; Challenges in the human environment; Geographical applications. Fieldwork is the responsibility of the student's commissioner
- Levels:** 1 year and 2 year courses available
- Outcomes:** Access to a range of Post-16 courses and employment opportunities

NEW: IGCSE Art and Design

- Specification:** Pearson Edexcel 4FA1
- Topics Covered:** Drawing, mixed media, printing, graphic design, multi-media, 3D and product design
- To Note:** This course is assessed fully online
- Course Types:** Two year course
- Outcomes:** Access to a range of Post-16 courses and employment opportunities

Functional Skills Courses

- Specification:** Pearson Edexcel on-demand assessments
- Subjects:** English (Levels 1 and 2), Maths (Level 1), Digital Skills (Level 1)
- To Note:** Mentors are responsible for entering their students, Academy21 don't prepare students for the Speaking & Listening Assessment
- Outcomes:** Access to a range of GCSEs, Post-16 courses and employment opportunities

Entry Level Science 'Everyday Science'

- Specification:** WJEC 6430QC
- Topics:** GCSE Science topics, explored at a basic level
- To Note:** Aimed at Y10 and Y11 students to fill gaps in their learning. Non-examined assessments, grades 1 or 2 at GCSE level.
- Outcomes:** Access to GCSE Combined Science and a range of Post-16 courses and employment opportunities

Vocational Course: Cambridge Nationals ICT

- Specification:** J836
- Content:** Use of spreadsheets and augmented reality software, presentation and data manipulation skills developed
- To Note:** Aimed at Y10 and Y11 students optional to take over 1 or 2 years. Non-examined assessments and one exam.
- Outcomes:** Access to a range of Post-16 courses and employment opportunities in IT

PSHE – Additional Curriculum

- Specification:** Provides Key Stage 4 students an essential understanding of relationships, love, safe sex, emotional and physical wellbeing, drugs, alcohol, and cyber safety over 1 lesson per week.



Online Alternative Provision for Students in Wales

Academy21, established in Wales in 2011, is a leading provider of live online alternative education.

We partner with schools across multiple Welsh regions, including Vale of Glamorgan, Powys, Cardiff, Merthyr Tydfil, and Monmouthshire, supporting students facing diverse challenges.

Academy21 follows the WJEC specification for Welsh students, ensuring alignment with the curriculum requirements in Wales. WJEC courses are only available to Welsh students. In England, WJEC operates under the Eduqas exam board; however, Academy21 exclusively follows the WJEC specification for Welsh students.

Years 7 to 9 | Key Stage 3

Subjects: English, Maths, Science, Digital Skills, PSHE, Humanities, and Citizenship

Our curriculum is designed to prepare students for progression to their GCSE subjects.

*** Please note:** Currently, all lessons are delivered in English.



Years 10 and 11 | Key Stage 4

Subjects: English Language, Maths & Numeracy, and Science

Our WJEC-specific courses run over one or two years.

- Year 11 students can take English and Maths as a one-year course with a condensed curriculum, focusing on the most crucial knowledge and skills to prepare for exams.
- In Maths, students can join either a Foundation or Intermediate class.
- For WJEC Science, Year 11 students who have missed significant portions of Year 10 can opt to join both Year 10 and Year 11 classes to ensure they cover all units.
- New Year 10 Maths and English specification from September 2025, Science – September 2026.

What to expect

Schools in Wales can expect all the same features of Academy21 including:

- ✓ 100% Live Lessons
- ✓ Inclusive, high-quality, flexible learning
- ✓ Immediate enrolment available
- ✓ Small class sizes up to 15 students
- ✓ Friday consolidation lessons available
- ✓ Access to enhanced support courses
- ✓ Recorded lessons and access to lesson content area for revision
- ✓ Safe and secure learning environment – all staff have enhanced DBS and undergo yearly safeguarding training
- ✓ Attendance and engagement reporting lesson by lesson plus termly teacher reports

Making a Difference in Vale of Glamorgan

Since using Academy21, pupils in Vale of Glamorgan have become more engaged in their classes. The Council also highlights its accessibility, quick implementation, and cost-effectiveness.

"For us, Academy21 has been invaluable in giving children instant access to education, regardless of their location. For students with anxiety who are unable to leave the house, the remote learning functionality meets their needs without compromising their learning, particularly for core subjects like Maths, English, or Science."

— Vale of Glamorgan Council



NEW: Key Stage 2 Curriculum for years 5 and 6

Our Key Stage 2 provision for Years 5 and 6 combines the core skills in reading, writing and maths, interwoven into a holistic curriculum of PSHE, wellbeing and oracy, ensuring your pupils are secondary-ready.

Our flexible morning or afternoon programme helps schools to accommodate a wide range of needs and supports the delivery of internal alternative provision, flexible, and part-time timetables.

How it works

In partnership with you, this primary offer enables pupils requiring Alternative Provision to access a reading, writing and maths curriculum that, alongside our pastoral skills development, equips your pupils with strong foundations for full re-integration or transition into the next phase of their education.

Whether your pupil needs a short-term circuit break, or if you're looking for extended support for your in-house provision, we're here to help.

Our class sizes are small, so our teachers can prioritise time with each pupil. Our classes provide flexible options for engagement and participation, including typed answers and verbal interaction using audio and camera functionality.

Primary school partners benefit from the same attention to detail, high level of customer service, and reporting functionality as all of our clients. Attendance, effort, understanding and interaction data are also provided for each student after every session.

For more information on our custom-built portal and reporting functionality, [see page 49.](#)

	AM	or*	PM	MON	TUES	WEDS	THURS	FRI
	9:05 - 9:45		12:50 - 13:30	Reading and Wellbeing	Reading and Wellbeing	Reading and Wellbeing	Reading and Wellbeing	Reading and Wellbeing
	9:50 - 10:30		13:35 - 14:15	Writing and PSHE	Writing and PSHE	Writing and PSHE	Writing and PSHE	Writing and PSHE
60 MIN BREAK (AM) OR 15 MIN BREAK (PM)								
	11.30 - 12.10		14:30-15:10	Maths and Social Skills	Maths and Social Skills	Maths and Social Skills	Maths and Social Skills	Maths and Social Skills
BREAK								

*Students attend either the morning programme or the afternoon programme

Our primary programme consists of:

- ✓ Live, adaptive lessons delivered by qualified and experienced teachers, with a focus on relational teaching
- ✓ 3 x 40-minute lessons each day, 5 days a week
- ✓ Functional Reading, Writing and Maths, integrated with PSHE, Wellbeing and Oracy
- ✓ Highly engaging, interactive and varied class content comprising elements such as circle time, teamwork, movement, turn taking, speaking and listening
- ✓ Half-termly theme-based units of work to equip students for transition by the end of the year



NEW Courses

GCSE Booster Courses

Our GCSE Booster Courses are a popular choice for schools and colleges, supporting students in achieving a GCSE in English Language or Maths. The GCSE Resit Booster is an 8-week course featuring small-group, live teaching focused on the key content needed to prepare for resits with confidence. Students receive four live sessions per week, per subject, plus full access to recordings via the Student Portal—an excellent revision resource. We also offer bespoke booster sessions tailored to individual school needs, as well as additional boosters, short-term targeted interventions for students in need of additional support at any time or aiming to improve their grades.

Next Steps: Reintegration & Wellbeing programme

Our Next Steps: Reintegration & Wellbeing Programme is a bespoke series of live workshops, delivered by specialists and designed with Key Stage 3 and Key Stage 4 in mind.

The series of sessions is delivered once per week, and topics are mapped out over the year. Students enrolled on this course will receive a carefully sequenced curriculum that focuses on the personal attributes associated with a young person's wellbeing and development, and will also cover a range of current affairs and national awareness events.

These sessions also have a real focus on supporting students to reintegrate successfully back into their 'home' school or setting or to transition onto another placement. Throughout these sessions, we unpack what it means to be resilient, independent and healthy, both mentally and physically. We discuss reintegration and transition, and place great emphasis on the skills needed for the next phase of their lives, be that Key Stage 4 or careers for school leavers. All sessions are live, with teachers delivering directly to the students, answering questions and providing feedback via the chat. These sessions are also recorded and accessible to your students via their Student Portal, offering excellent flexibility in how you use them to complement the curriculum.



IGCSE Art and Design

With Art and Design becoming an increasingly popular choice for GCSE students, we're thrilled to support you in offering this option to your students.

Our IGCSE in Art & Design provides the opportunity to engage in a creative subject entirely online, from start to finish, including the final IGCSE exam fully online in our custom virtual classrooms.

Specialist Teachers

Your students will be guided by subject specialist teachers who utilise innovative technology to enhance their learning and practical work. This course follows a one-day-per-week model, beginning with a live session and followed by independent studio time. A second live session later in the day allows students to receive personalised feedback from their teacher and showcase their work for recognition.

Flexible Schedule

For students who need a flexible schedule between mainstream and AP, this course offers an excellent option for a full-day AP provision that leads to an IGCSE. Additionally, this model enables students to continue studying relevant content for GCSE Art and Design programme they will reintegrate back into upon returning to school. They can continue building their portfolio of works with us, and we can tailor teaching to individual needs. Fine Art includes a range of artistic forms, and any portfolio work completed during their time with us can be transferred back to their home school once authenticated according to our guidelines.

Working With You

We can also incorporate a student's previous artwork from their GCSE by obtaining an authentication certification from their former teacher, allowing it to be used in the IGCSE. While our Art curriculum covers photography and fine art at IGCSE, our specialist Art teachers are equipped to support students with any Art and Design component they are currently working on in their school. Fine Art includes a wide range of artistic forms, and any portfolio work completed during their time with us can be transferred back to their home school once authenticated according to our guidelines.

Online Exam

The fully online exam takes place in bespoke virtual classrooms, developed in collaboration with Pearson Edexcel—making us the only platform to offer this service. Over a 10-hour period scheduled across several days, candidates present their work live on camera. Art specialist teachers invigilate and provide technical support throughout. This innovative model allows students to complete their entire IGCSE online, supporting those with exam anxiety or extended absence to achieve a qualification.

Key Stage 5 Online Provision

Academy21 is pleased to offer inclusive provision for Key Stage 5 via our sister school, King’s InterHigh.

With twenty years’ experience delivering unparalleled online education, King’s InterHigh’s online Sixth Form offers a full school curriculum in an engaging, nurturing environment.

Lessons are live and interactive, challenging students to develop teamwork, leadership and self-directed study skills that will set them up for successful futures in apprenticeships, careers and onward study.

What Does an Online 6th Form Look Like?

- Students are taught in small classes, with live lessons and 24/7 access to learning materials.
- Our online lessons are live, inclusive, enhanced with technology and recorded for playback.
- Students can study 1-5 A Levels and blend online learning with in-person classes at a school or college.
- Our A Level teachers are subject experts and experienced in teaching and offering tailored support online.
- School life: we have assemblies, clubs, school houses and a school-led social platform.
- Students can tailor study hours to align with peak productivity times and personal schedules.
- AI helps us individualise learning, so students can focus on difficult subjects whilst excelling in stronger ones.
- Lessons are 40 minutes long



Curriculum

Most students opt for 3 A Level subjects to align with university entry requirements, but your students can study anywhere between 1 and 5 A Level subjects with King’s InterHigh:

Key Stage 5 Subject List

• Biology	• History
• Business	• IT
• Chemistry	• Law
• Classical Civilisation	• Maths
• Computer Science	• Media Studies
• Economics	• Physics
• English Language	• Politics
• English Literature	• Psychology
• French Geography	• Sociology
• Further Mathematics	• Spanish
• German	

Academy21 and King’s InterHigh Working Together

Academy21 and King’s InterHigh are part of Inspired Education Group. Together we provide high-quality, inclusive education to more than 10,000 students each year. Academy21 is the UK’s leading online alternative provision, partnering with hundreds of schools, local authorities and other organisations. Academy21’s Key Stage 3 and 4 online alternative provision is designed for students who may be experiencing challenging circumstances, face barriers to education or have additional needs.

As the leading online school, King’s InterHigh offers a rich full-school experience for students aged 7 to 19, offering iGCSEs, A Levels and the first fully online IB Diploma. Families and partner organisations from around the world choose King’s InterHigh to provide a flexible, enriching school experience that fosters friendships, communities and collaboration.

Our schools work together to offer complementary pathways, varied subject choices and tailored support to ensure each student receives the educational experience that is right for them.

CASE STUDY

Holly's story

Holly's medical condition and growing learning gaps

At 15, Holly faced a severe medical condition that kept her out of school during her crucial GCSE years. With hospital stays and treatment dominating her life, she fell behind academically and missed all of Year 11. Her local school couldn't provide the support she needed, leaving Holly and her family feeling hopeless.

Joining King's InterHigh via Academy21

Desperate for an alternative, Holly's mother, Tina, discovered Academy21 through their local authority. Academy21's partnership with its sister school, King's InterHigh, offered Holly a lifeline. Academy21 provides high-quality online alternative provision for Key Stage 3 and 4. However, once enrolled, students can also access Key Stage 2 to 5 online education via our sister school, King's InterHigh, depending on their needs and circumstances.

After reviewing Holly's needs for an experience as close as possible to mainstream education, and the ability to study a wide range of GCSE subjects, the decision was made for her to join our sister school, King's InterHigh.

Finding her footing and fighting back: An inspiring success story

Although the first few months were challenging, Holly soon found her footing. The ability to watch recorded lessons and contact teachers directly meant she could manage her education around her medical appointments.

Plus, the supportive environment at King's InterHigh gave Holly the purpose and normalcy she desperately needed. *"It gave her a purpose during the day; she was two years behind and needed something to make her feel 'normal';"* Tina explained.

Over two years, Holly's hard work and determination paid off. She completed seven GCSEs, achieving outstanding results, including an 8 in Biology, Chemistry, and Physics, and a 7 in Maths. Holly has now been accepted into the college of her choice, where she plans to pursue her ambitions in the medical field.

For Holly, King's InterHigh provided more than just education; it gave her a community, stability, and a path to the future she once thought was out of reach. Reflecting on their journey, Tina expressed heartfelt gratitude to Academy21 and King's InterHigh, saying, *"This school changed Holly's life. Without them, she wouldn't have had a future."*



“Three years ago, in May, she may not have lived. She wasn't going to make it until Christmas. 3 years later, she is going strong. This school has been everything for us. I just want to thank you all, you have given Holly a future.”

“Without King's InterHigh, she couldn't have gone to this college. It has given Holly a future; it has given her everything,” Tina emphasised.

“She has worked so hard and has been so self-motivated. She is just an inspiration, so positive, so brilliant. Healthwise, she is stable now and wants an education and a future,” Tina proudly shared.

“This school changed Holly's life. I really want everyone to know what a difference you have made.”



Reporting and Monitoring

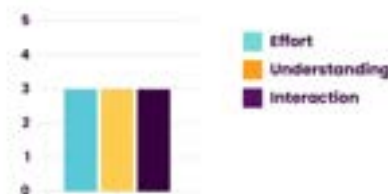
When you enrol a student with us, you'll get to set the student's attendance and engagement expectations that we monitor and report on.

We encourage learning mentors to set realistic targets to suit each student's situation – whether that's increased attendance, more engagement in lessons, or regular homework completion.

Then, we provide all the monitoring and reporting you'll need to track their progress. Teachers record each learner's Effort, Understanding, and Interaction (EUI) levels every lesson. You'll get access to all of this, plus attendance information, on a lesson-by-lesson basis through the Mentor Portal as well as weekly attendance reports and termly academic reports with teacher comments. By considering EUI scores, learning mentors can establish appropriate and attainable goals and gauge how well students are working towards them over time.

We encourage mentors to monitor the EUI data regularly and to use it to motivate and encourage their learners to make small incremental gains towards their overall goals. In this way, schools can use this data to ensure every learner makes the personal progress they're aiming for, such as achieving qualifications, improving attendance, or reintegrating into mainstream education.

Class Performance (out of 5)



Activities



Grades



Attendance



“

Schools and local authorities value the quality of the information received about pupils they place at Academy21. They praise the responsiveness of the service.”

Ofsted Inspection Report, 2024



Enrolment Process

We aim to make our enrolment process easy and efficient for partnering schools and local authorities in order to support your students as and when they need. We can enrol students in as little as two working days.

01.

Reach Out

Contact our team online, by phone or email:

0800 208 8210

academy21.co.uk/contact
contact@academy21.co.uk

02.

Connect with your Regional Partnership Manager

Once you reach out, you'll be connected with a dedicated Partnership Manager (PM) to discuss your needs. You can refer a student right away or ask any questions. You can also meet your PM in person for a live demo or communicate via Teams, email, or phone. Your PM will provide a quote based on your specific needs.

03.

Account Set Up

We will set up your account and send you instructions on how to register and access our secure online portal. This is where you will enter the information for each student you want to enrol.

We will also connect you with your Regional Client Administrator (RCA), who will support you through the onboarding and setup process.

04.

All Set!

Once you have entered your students' enrolment information and confirmed acceptance of your quote(s), you are all set! You will receive your students' login details, and they can start accessing lessons.

Please share the login details with your students as our customer support team only communicates with mentors and never directly with students.

Key Stage	Course type	Subject	Specification	Provision
Key Stage 2	National Curriculum	Mathematics, English (including Reading and Writing)	Primary National Curriculum	Academy21
Key Stage 3	Skillbuilder Courses	Maths	National Curriculum	Academy21
		English	National Curriculum	
		Science	National Curriculum	
		Humanities & Citizenship	National Curriculum	
		PSHE	National Curriculum	
		Digital Skills	Edexcel	
Key Stage 4	GCSE	Maths	AQA 8300, Edexcel 1MA1, WJEC Mathematics & Numeracy (Foundation Tier)	Academy21
		English Language	AQA 8700, WJEC 3700'	
		English Literature	AQA 8702	
		Combined Science (Trilogy)	AQA 8464	
		Triple Science	Biology AQA 8461 Chemistry AQA 8462 Physics AQA 8463	
		Science	WJEC 3430	
		Citizenship Studies	AQA 8100	
		History	AQA 8145	
		Geography	AQA 8100	
		Art & Design	Pearson Edexcel Fine Art (4FA1) and Photography (4PY1)	
	Entry Level	Everyday Science	WJEC 6430QC	
	Functional Skills	Maths - Level 1	Edexcel - Level 1	
		English - Level 1	Edexcel - Level 1	
		English - Level 2	Edexcel - Level 2	
		Digital Skills - Level 1	Edexcel - Level 1	
	Vocational Skills	Cambridge Nationals IT- Level 1	OCR JB36 - Level 1	
		Cambridge Nationals IT- Level 2	OCR JB36 - Level 2	
	Year 11 GCSE Rescue	Maths	AQA 8300, Edexcel 1MA1	
		English Language	AQA 8700	
		Science	AQA 8464	
	Non-accredited	PSHE	N/A	
		Study Skills Workshops	N/A	
		Health and Wellbeing Workshops	N/A	
		Reintegration and Wellbeing Course	N/A	
Key Stage 5	A-Levels	Choice of over 20 subjects. Visit: kingsinterhigh.co.uk/a-levels-online	AQA/Cambridge International/Edexcel/OCR	King's InterHigh

Supporting students to thrive in and beyond school

Our range of optional support classes available acrosss our provision

Course type	Subject	Provision
Academic Support Courses	EAL Support	Academy21 or King's InterHigh
	Literacy Support	Academy21 or King's InterHigh
	Numeracy Support	Academy21 or King's InterHigh
	Maths Support	Academy21 or King's InterHigh
	Study Skills Workshops*	Academy21 or King's InterHigh
Wellbeing Support Courses	Anxiety Management	Academy21 or King's InterHigh
	Social Skills Classes	Academy21 or King's InterHigh
	One-To-One Counselling	Academy21 or King's InterHigh
	Wellbeing Mentoring	Academy21 or King's InterHigh
	Health and Wellbeing Workshops*	Academy21
	Next Steps: Reintegration and Wellbeing*	Academy21
Bespoke combinations	We are delighted to be working with schools to provide bespoke classes that meet the specific needs of their cohorts. Talk to your partnership manager for availability and details.	

*Available at Key Stage 3 and 4 only.



**To get in touch, call us on 0800
2088210 or visit: academy21.co.uk**

If you are interested in finding out more about Academy21 and our alternative education provision or wish to discuss the individual needs of your pupil(s), then please contact our friendly team.

